



**struct rehab india**  
your challenge is our task



# CONSTRUCTION SOLUTIONS

- RCC Drilling
- Anchor Bolt & Chemical Rebar Fixing
- RCC Core Drilling
- RCC Diamond Cutting
- Demolition Work

## Company Reviews

M/s INFRA BUILD CONC is the outcome of 18 years of extensive services on construction solution RCC core Driling, Anchor bolt & Chemical rebar fixing, RCC Daimand Cutting, Demolition and Retrofitting works rendered by the parent company "Om Shakthi Engineering & Contractors"

In the year 2003, Mr. P M VELU the founder, floated a company "Om Shakthi Engineering & Contractors" to handle concrete repair works. During its long service, it not only specialized expertise in repairs and rehabilitation of both steel and concrete structures, but also trained technicians to handle the site problems with care and confidence.

The company has successfully executed several major and minor repair projects related to residential, commercial, thermal, cement, hydraulic structures, etc. With an effective implementation of project management system, trained technicians augmented with the latest art-of-the equipment worth of 5 Crores of rupees and repair technology, the company is capable of handling any restoration jobs including under water works. It has a sound man power of 15 engineers including trained technicians and of about 140 workmen.

Keeping in view to serve customers from different parts of the country and neighboring countries the company was renamed as INFRA BUILD CONC. with branches in strategic locations.





To be a global premier organization devoted solely to repair and rehabilitation and engineering services to support the construction industry.



Quality is first engineered in terms of right selection of materials, methodology, post repair evaluation by trained and knowledgeable technicians. Special emphasis on OH&S.



To be a global premier organization devoted solely to repair and rehabilitation and engineering services to support the construction industry.



Quality is first engineered in terms of right selection of materials, methodology, post repair evaluation by trained and knowledgeable technicians. Special emphasis on OH&S.

# OUR STRENGTH



**QUALIFIED  
AND TRAINED  
MAN POWER**

**STATE  
-OF- ART- OF  
EQUIPMENT**

**EFFECTIVE  
MANAGEMENT  
SYSTEM**

## OUR SPECIAL EMPHASIS

### **OH & S :**

'No injuries to any one, any time' is our moto and action plan. We never comprise in implementing OH & S polices at site.

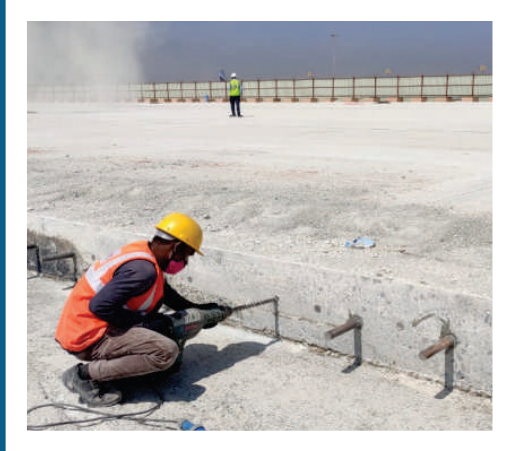
### **CONTINUOUS EDUCATION:**

Continuous training to upgrade technology and its effective implementation is the plus point.

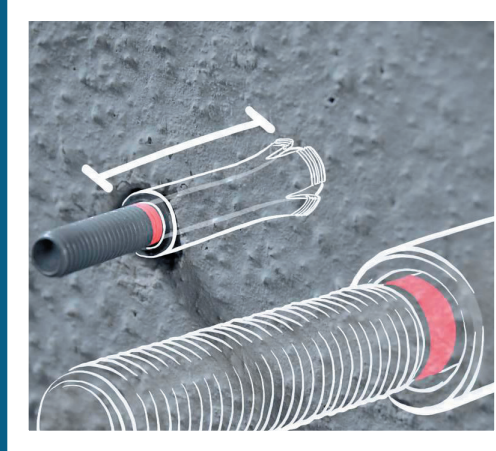
### **LEAN TECHNOLOGY :**

Saving time, materials & energy are the key parameters for sustainability and profitability of the organization. We follow these principles at every site.

# OUR SERVICES



**RCC Drilling**



**Anchor bolt & Chemical rebar fixing**



**RCC Core Drilling**



**RCC Diamond Cutting**



**Demolition Work**



**Oh & Shatfty**

# RCC DRILLING

As dealers of leading construction materials and solutions, we also offer niche products such as mechanical chemical anchor that of great use in the application and insertion of chemicals during the different stages of construction.

We offer a wide variety of mechanical chemical anchor sourced from leading manufacturers at cost effective prices. We are involved in the trading of different chemical anchor that come with mechanical devices that ensure quantified and right application of the chemicals. These specialized machines are customized to the type of chemical being applied.

## Chemical Anchor Bolt Fixing Works

We perform all types of anchoring/anchoring works consisting of heavy duty chemical anchor, heavy duty mechanical anchor, medium duty mechanical anchor and medium duty chemical anchor (Hilti/Fischer). We undertake the complete task proficiently and ensure high precision is maintained for excellent results.

We utilize finest grade material for the purpose and have expert professionals for carrying out the building anchoring works. This aids us in delivering satisfying results to the customers. Our services are available for the customers at reasonable expenses as per the requisite of the task.

## RCC Drilling & Rebar chemical grouting

We provide extensive RCC drilling works to our customers as per their requirement. We undertake all type of rebaring work consisting of column extension, structural connections, repair work, cantilever connections and retaining wall applications.

The entire process is carried out under strict surveillance and we make sure that no chances of nay flaws are there. We make sure excellent output is derived for the customers. Our rebaring services are provided to the customers at reasonable expenses, which make the entire process extremely cost effective for the customers. Ideal for professional fixing/anchoring of reinforced steel bars in concrete work, structural repairs in building or any civil construction structures, in wet or dry conditions. We are applicators for Hilti, Fischer or other grouting chemicals and capsules or fixing systems as per customers requirement or consultants.



RCC Drilling and Chemical bar fixing

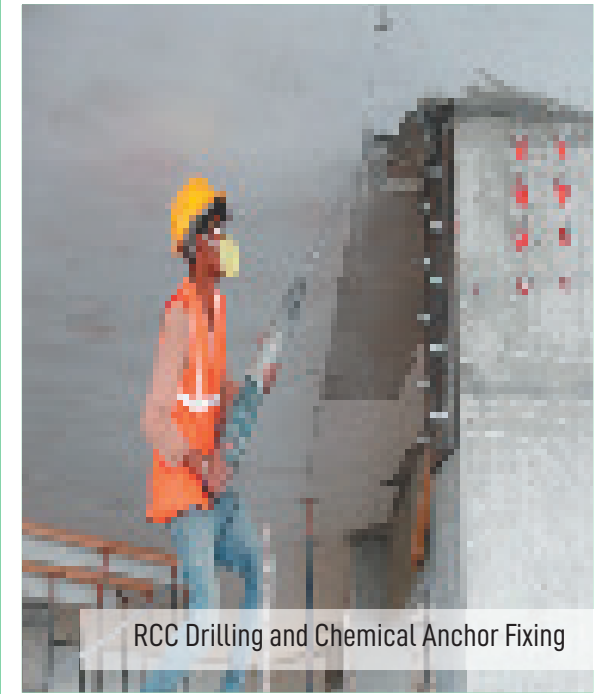
# Anchor bolt & Chemical rebar fixing



Drilling with Chemical rebar Fixing



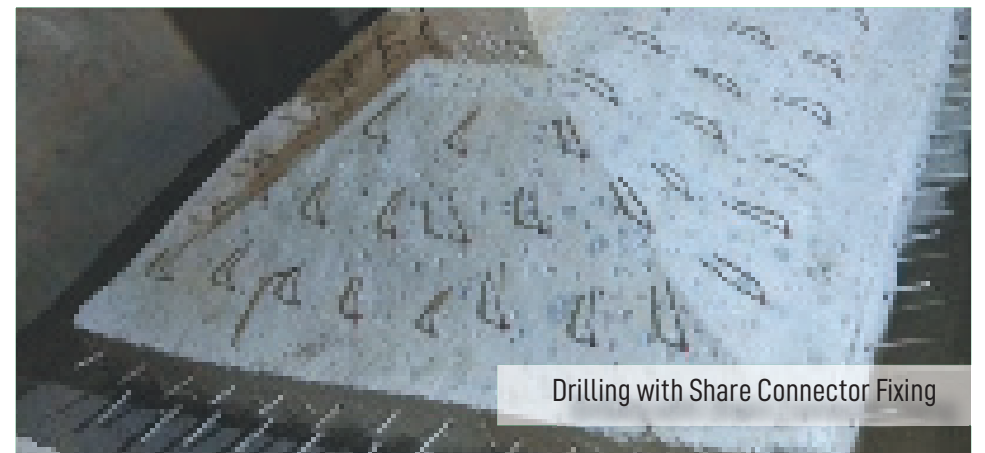
Fixing of HSL 3 Mechanical Bolt



RCC Drilling and Chemical Anchor Fixing



RCC Drilling HST Mechanical Bolt fixing



Drilling with Share Connector Fixing

# RCC Core Drilling

Core drilling techniques are used when precise, circular cuts are needed. Holes of any diameter up to 600 mm and even more are easily drilled to make openings for plumbing, electrical and HAVC installations.

Core drilling is also commonly used to create holes for routing cables or placing anchoring bolts, installing load carrying bars or analysis of structures, rocks, strata etc.



## CORE DRILLING WORKS





# RCC Hand Cutting



## RCC FLOOR SAW CUTTING

Floor sawing is the most commonly used diamond cutting method. It is typically used to cut horizontal flat surfaces, such as floors, bridge decks and pavement. Also called slab saws, floor saws feature a diamond blade that is mounted on a walk-behind machine requiring only one operator. They can cut up to 24" in depth. Floor saws are typically used to provide expansion joints, remove damaged pavement sections, clean and prepare random cracks for repair and remove concrete sections for demolition purposes.

Floor saw cutting is ergonomically designed structure to ensure comfortable operation super-rigid box frame ensures straight cuts with comfortable and firm handle grip easy crank for raising/lowering cutting blade with easy-remove, rustles ploy water tank, this provide an optimum flow and volume of water to the blade..



RCC Floor Saw Cutting

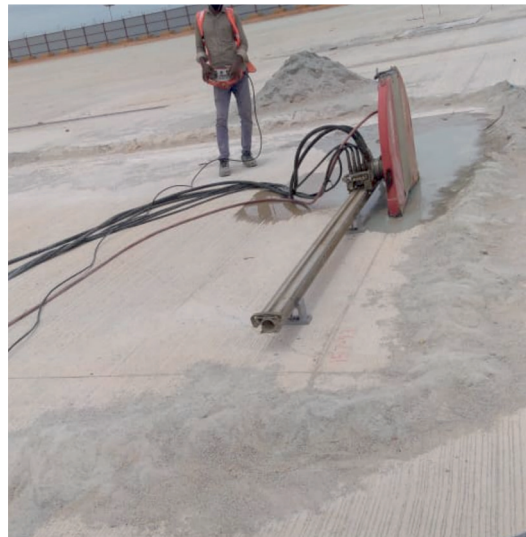
# WALL SAWING

## WALL SAW DIAMOND CUTTING

Wall sawing employs a circular blade on a track-mounted machine. The track is attached to the horizontal wall or steep inclines that will not permit the use of a flat saw. Wall or track sawing is typically specified to cut precise dimensional doors, vent and window openings. It is also an excellent choice for creating precise openings in any concrete structure.

Diamond wall saw cutting of slabs, beams and walls and other civil structures with diamond tools and dismantling the structures with proper tools, fixtures and altering the structures as required.

Capacity: It can cut upto 450mm thick RCC.



# DIAMOND WIRE SAWING

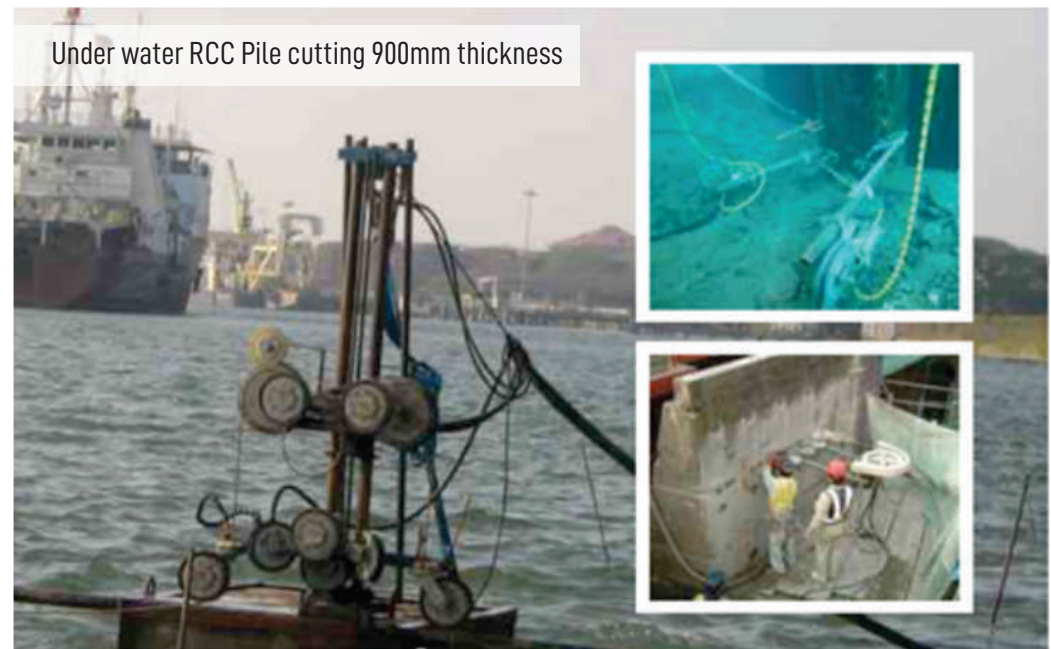
## RCC CUTTING (BY DIAMOND WIRE SAW)

Many a time, construction project requires some type of concrete cutting of different elements. It may slab or column or beam or wall or foundation or any RCC structure. Depending upon the space availability, thickness, shape, type of structure, etc. several techniques are available by using modern tools from simple hand saw machine to remote controlled diamond wire saw machine.

It may appear quite simple to cut down concrete by modern tools, but practically there are many factors that require attention to execute a safe and successful concrete cutting project. Knowledge of operation methodology, judicious selection of process and tool, safety concerns, experience etc count a lot. IBC has been successfully handling such projects, are presented.



Silo RCC Wall Wire  
sawing 350mm thickness



Under water RCC Pile cutting 900mm thickness

# Demolition Work

## RCC DEMOLITION / DISMANTLING WORKS

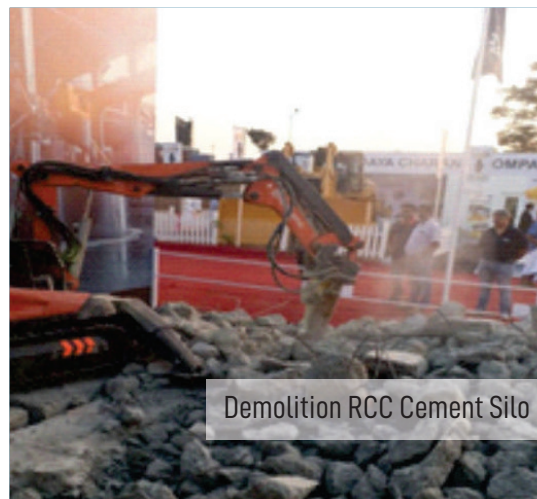
- The choice of choosing a demolition method depends on a number of factors such as the project conditions, site constraints, sensitivity of the neighborhood and availability of equipment etc.
- There are various methods of demolition of structures.
  1. Demolition by human operatives.
  2. Using saw cutting / breaking / drilling
  3. Use of demolition machines mechanically
  4. By explosives
  5. Deliberate Collapse method.
- The demolished material is transferred to dumping yard by several modes of transportation.



Column Demolition



Demolition for RCC Beam



Demolition RCC Cement Silo



Over Head Tank Demolition

# OUR ESTEEMED CLIENTS AND THEIR VIEWS

**ACC**

**acciona**  
Energy

**ACME**  
interiors  
discover perfection

**adani**<sup>TM</sup>

**ADARSH DEVELOPERS**

**APARNA**  
Lead the future

**Apollo**  
HOSPITALS

**ASHOK LEYLAND**

**BHEL**  
Maharatna Company

**Biocon**

**Bisleri**

**BRIGADE**  
GROUP  
For a better quality of life,  
upgrade to Brigade

**BFW**



**Chettinad**  
cement

**CHRIST**  
UNIVERSITY  
BANGALORE, INDIA  
Declared as Deemed to be University under Section 3 of UGC Act 1956



**INDIA**  
CREATING WEALTH FOR WELLBEING

**GVK**

**GAMMON**  
Builders to the Nation

**HCL**

**HAL**

**IVRCL**<sup>TM</sup>  
IVRCL Infrastructures & Projects Ltd.

**JMC Projects (India) Ltd.**

**JSS HOSPITAL**

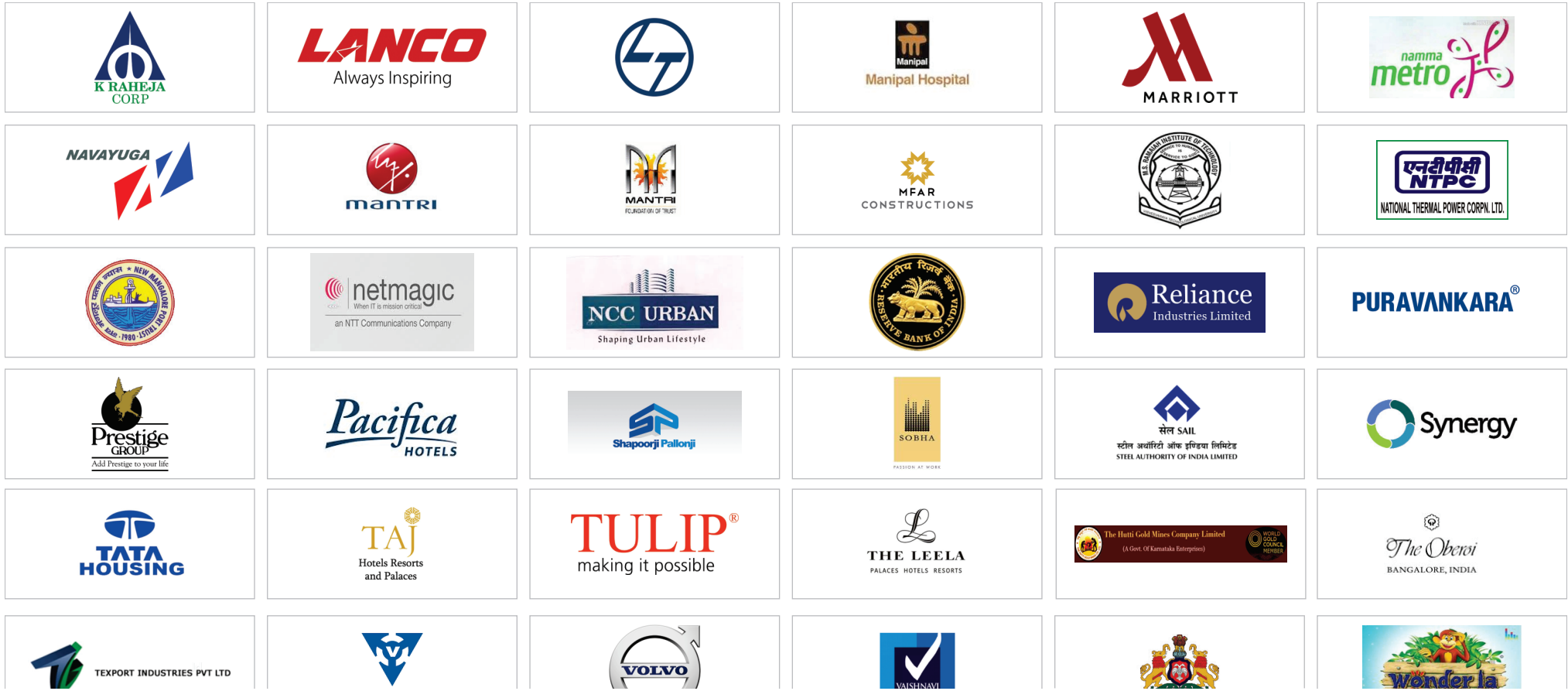
**JSW Steel**

**JSW Cement**

**JK Cement LTD.**

**KCT** | **KCT**  
Group

**Krishna**  
enterprises



Construction Soutlion

Panindia ...!



**struct rehab india**  
your challenge is our task

**struct rehab india Pvt. Ltd.,**

#13, 1st Main Road, 4th Cross, Muneshwara Block, Devinagar, Bengaluru North,  
R.M.V Extension, 2nd Stage Bengaluru-560094

Office No: +91 9742777714 +91 9886149708 / 8951142146

Email : [structrehab2003@gmail.com](mailto:structrehab2003@gmail.com) | web: [www.structrehabindia.com](http://www.structrehabindia.com)